

Connections made easy, built to last



Professional solutions for every profession

Whether you are an engineer, a plumber or an architect, we can assure you that, as a professional user, you will love our extensive range of connectors and fasteners. Our pipe couplings, hose clamps, fastening elements and compression fittings are technologically advanced and will help you maintain operational integrity and safety

even in critical applications. With our leading brand NORMA®, we offer you first-class quality, unmatched reliability and outstanding performance. This is the reason why we have been setting the standards for excellence in advanced joining technology for over seven decades.

What professional users love about NORMA

✓ Win time

No time to bother with small components? Our NORMA quality standard ensures accuracy of fit during assembly as well as simple and safe handling. We take care of your connecting components, so you can focus on the big system.

✓ Save money

You want to reduce maintenance cost? Our products require no maintenance, they are made to last. But if your system does, our products allow you to execute it quickly and easily, as our products can be easily disassembled and reassembled.

✓ Enjoy peace of mind

You need a long-lasting system without leaks? NORMA's "Fit and Forget" commitment and the broad range of certifications mean worry-free installation without subsequent complaints or damage, driving satisfaction for you and your customers.

Don't let your connections be your weakest link!

Axial restraint connections

FGR Grip E



Axial restraint couplings for a compact, economical and reliable connection of plain-ended pipes (steel, stainless steel, cast iron).



FGR Plast Grip E



Axial restraint couplings to connect plastic pipes. Also usable for smooth thermoplastics such as PP and PE.



FGR Combi Grip E



Axial restraint pipe couplings to connect plastic pipes with metal pipes.



FGR Grip E-FP



The pipe couplings with flame protection are a perfect fit for applications in the marine sector.



Pipe Couplings

Axial non-restraint connections

FGR Flex E



Axial non-restraint couplings for a compact, economical and reliable connection of plain-ended pipes (metal, steel, plastic, cast iron, concrete).



FGR Flex 3



Axial non-restraint coupling with an extra wide band to connect metal and/or plastic pipes.



FGR REP E



Non-restraint repair couplings for a quick and easy repair of damaged metal and plastic pipes.



Repair solutions

DID YOU KNOW?

We cover the full range of EN 877

DCS:
DN 50-300
FGR:
DN 300-600

Drainage Connectors & Claws

DCS RAPID **NORMA**

Fast and easy connection of fittings and pipes made of cast iron according to EN 877.



DCS RAPID MSM **NORMA**

Quick release closure for fast installation. Especially suitable for repair purposes.



DCS Record Claw **NORMA**

Axial restraint claw which resists high tensile loads. To be used with DCS RAPID.



DCS Combi Claw **NORMA**

Axial restraint claw which resists high tensile loads. To be used with DCS RAPID.



Compression Fittings

Compression Fittings PN 10 **NORMA**

Fast and secure connection of polyethylene tubing for irrigation or for any domestic need. **Many shapes available.**



Compression Fittings PN 16 **NORMA**

Fast and secure connection of polyethylene tubing for any industrial, commercial or domestic need. **Many shapes available.**



Telescopic Fittings **NORMA**

The repair compression fitting for fast and easy replacement of damaged pipe parts.



MARLIN® PN 16 **NORMA**

QuickTight Technology to connect high- and low-density polyethylene tubing. Drinking water certified. **Many shapes available.**



Speed up your water pipe installations!

Hose Clamps

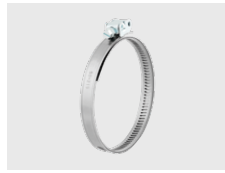
TORRO® **NORMA**

Perfect all-rounder according to DIN 3017. Fits the complete range of diameters and various applications. **Assortment available.**



Quick Lock **NORMA**

The band can be adjusted to the diameter of the pipe. The Quick-Lock housing allows easy and quick application.



Strip Steel **NORMA**

Quick and easy way to create clamps with different diameters. To be used with Quick-Lock housings.



GBS M **NORMA**

Heavy-duty bolted clamp with mechanically locked closure.



Fixing Clips & Cable Ties

RS **NORMA**

Pipe retaining clips to fix pipes, hoses, tubes, cables and harnesses securely. Easy installation and proven quality.



RSGU **NORMA**

Pipe retaining clips to fix pipes, hoses, tubes, cables and harnesses securely. The rubber profile protects against vibrations and creeping water.



Stainless Steel Cable Ties **NORMA**

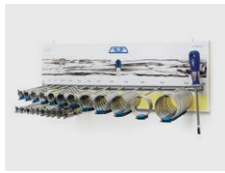
With ball locking system, enabling quick installation and low insertion effort.



Assortments and Kits

ABA Assortments **ABA**

Convenient way to have a whole range of different clamp sizes at hand. **Various versions available.**



TORRO® Assortments **NORMA**

Convenient way to have a whole range of different clamp sizes at hand. **Various versions available.**



Well-arranged assortments?

We've got you covered!

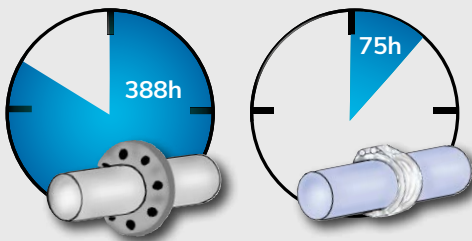


This is how you will benefit from our FGR pipe couplings

✓ Time saving

- No welding
- No necessity for prior pipe alignment or treatment of pipe ends
- Up to 80% time saving
- Cost effective alternative

(for 1,000 pcs)



Flange joint
OD* 88.9

NORMACONNECT®
Pipe coupling
OD* 88.9

✓ Compensation of pipe tolerances

- Compensates for pipe gaps up to 65 mm
- Compensates for axial movements up to 7.5 mm
- Compensates for misalignment up to 3 mm

✓ Angular deflection

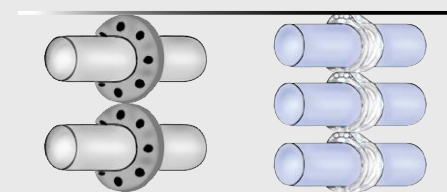
Compensates for angular deflection up to +/- 2° in total

✓ Practical use

- Detachable connection
- Re-usable

✓ Space saving

- Requires less space than conventional joining methods like flanges
- Can be installed in areas which are hard to access

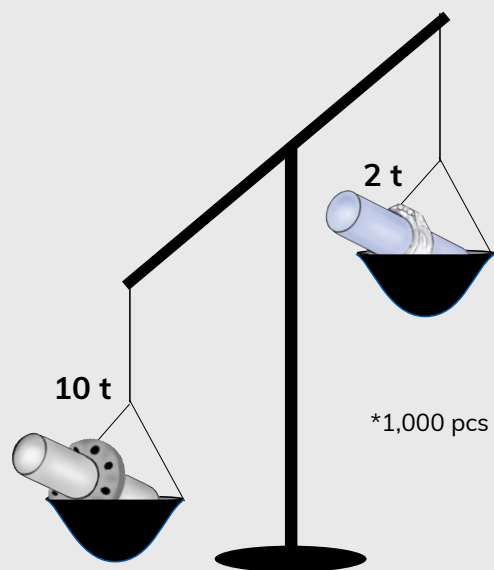


Flange joint
OD* 88.9

NORMACONNECT®
Pipe coupling
OD* 88.9

✓ Weight saving

70% less weight



Flange joint
OD* 88.9

NORMACONNECT®
Pipe coupling
OD* 88.9

We serve many different industries



✓ Industrial Plant Construction

Adding new plants and machinery can be one of a factory's biggest challenges as it grows. NORMA FGR pipe couplings help you to connect pipes of varying materials and sizes in a quick, easy and reliable manner.



✓ Technical Building Equipment

In combination with cast iron pipes, our NORMA DCS drainage connectors help you to create a reliable and non-combustible drainage system for your building construction projects of any size.



✓ Civil Engineering

A leaking supply or disposal line creates massive damage and repair costs. Our "Fit and Forget"-pipe couplings last as long as your pipes, so you can rest assured that our products will not have to be replaced later.



✓ Structural Engineering

Big infrastructure projects like bridges, tunnels and airports are extremely complex and require thorough planning. With our proven and tested connectors, we make it easy for you to have a reliable and economic system.

Connections made easy, built to last

Discover our complete portfolio

Infrastructure Catalogue

qrco.de/infrastructure-catalogue-en



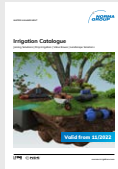
NORMA Catalogue

qrco.de/NORMA-catalogue-en



Irrigation Catalogue

qrco.de/irrigation-catalogue-en



We share our expertise

Leverage our expertise

Benefit from our long-term expertise in the field of joining and fluid handling technology. Here you will learn how to win time, save money and enjoy peace of mind with our products!



Want to get in touch? We'd love to connect with you!

NORMA Group Holding GmbH
Edisonstraße 4
63477 Maintal | Germany

+49 6181-403-0
norma-connects@normagroup.com

Your local distributor:

NORMA Group Holding GmbH | Edisonstraße 4 | 63477 Maintal | Germany | normagroup.com

This document supersedes all previous issues. No part of this publication may be reproduced without our prior written consent. In NORMA Group's policy of continual product improvements to meet user needs and technological developments, all models and sets listed in this folder (photographs, specifications, sizes and weights) may be upgraded or discontinued without notice and without any obligation on our part to modify tools or equipment sold previously. The recommendations for use and safety given in this folder do not replace accepted good practice or the safety related legal and regulatory provisions. References to standards implemented as of February 27, 2023 are not contractually binding.